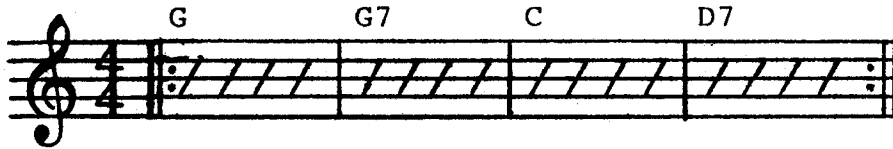
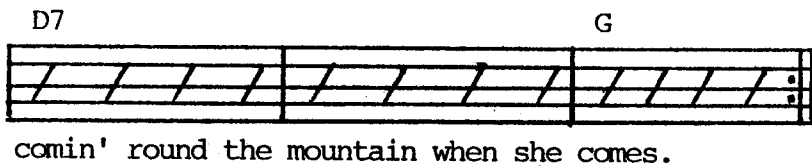
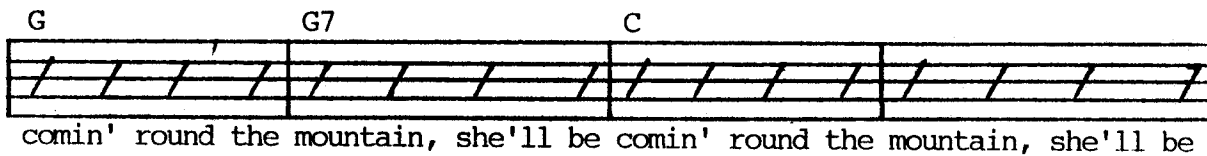
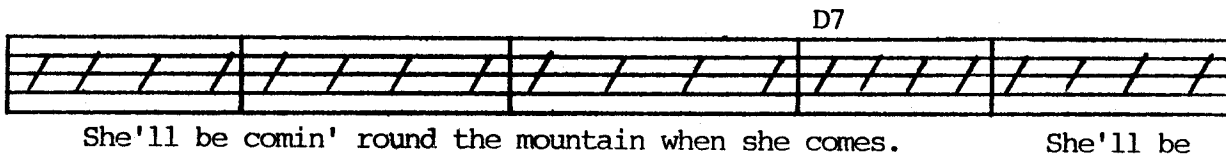
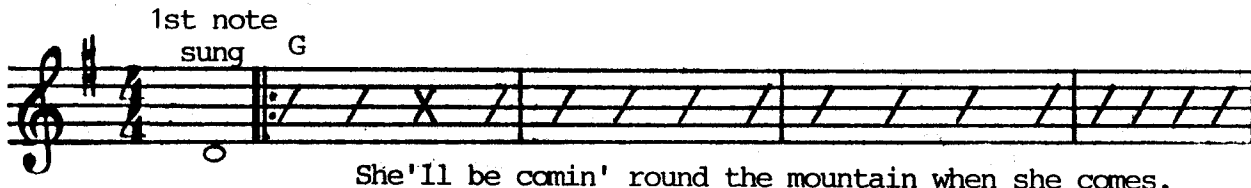


Chord Exercise 3

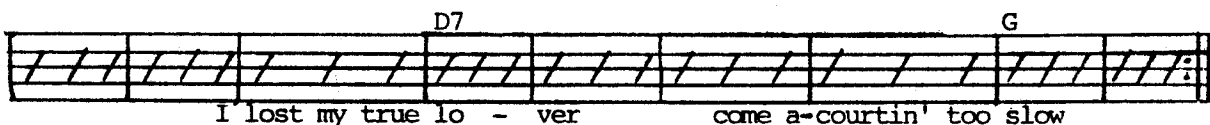
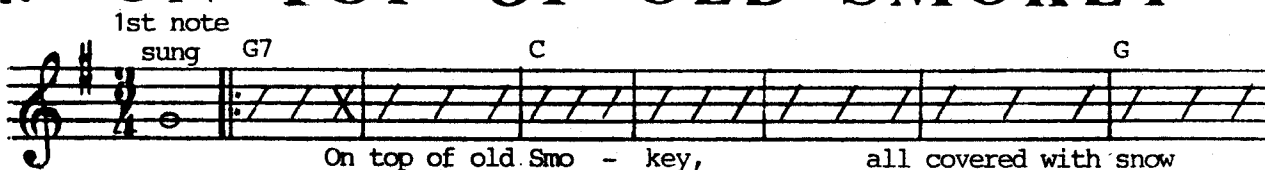


3. SHE'LL BE COMIN' ROUND THE MOUNTAIN



2. She'll be drivin' six white horses when she comes (etc.).
3. Oh we'll all go out to meet her when she comes (etc.).
4. And we'll kill the old red rooster when she comes (etc.).

4. ON TOP OF OLD SMOKEY



2. Well, courting's a pleasure, but parting is grief. And a false hearted lover is worse than a thief.
3. A thief always robs you and takes all you save. But a false-hearted lover, he sends you to your grave.