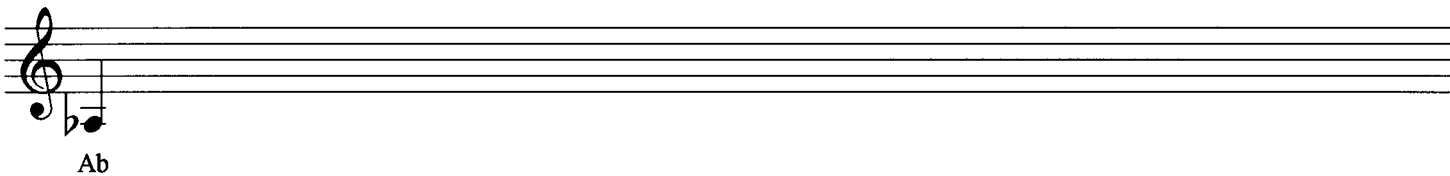
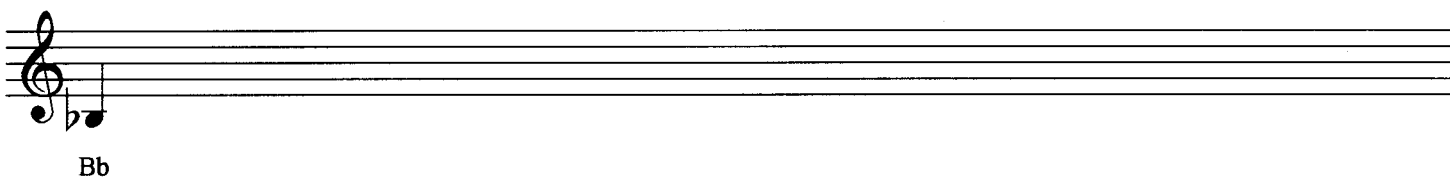
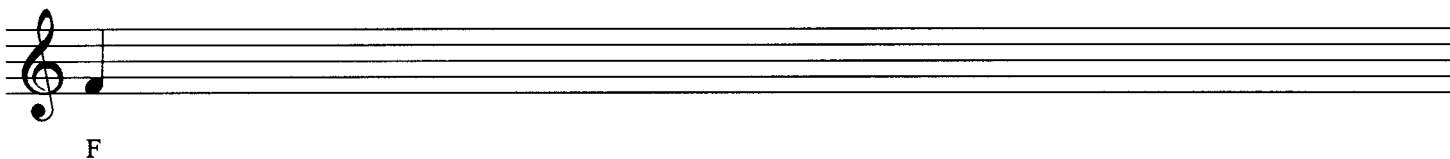
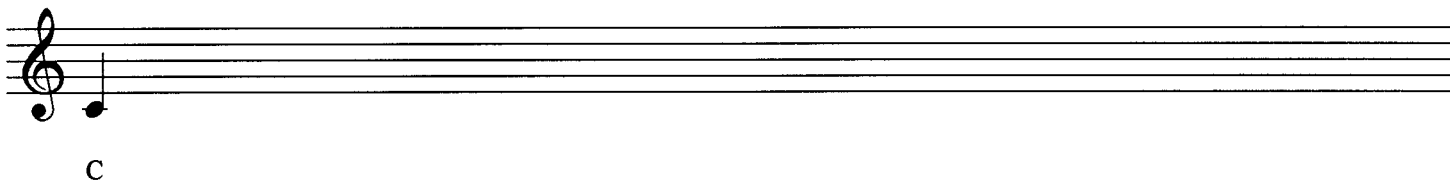
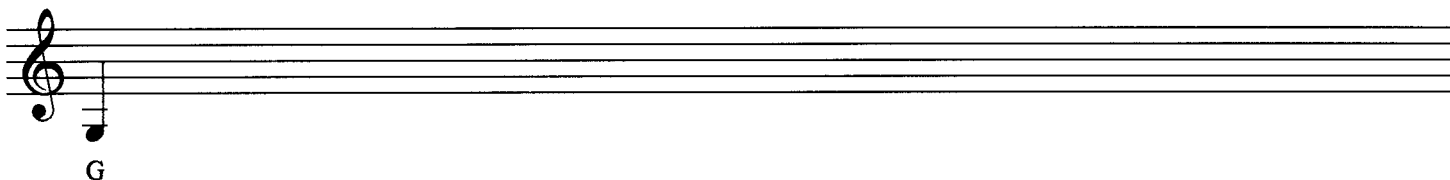


Assignment 4 continued:



There are other commonly used minor scale forms, principal of which would be harmonic minor and melodic minor. These scales will be explained later.

We have looked at scales with “Do” or “La” as the root, however scales can also be constructed starting on “Re”, “Mi”, “Fa”, “Sol”, or “Si”. These other “modes” will also be explained later.

KEY SIGNATURES

Since each major/minor key has a unique number of sharps or flats, the key of a piece of music can be indicated by the sharps or flats necessary to achieve a scale in that key. Remember, each key signature can indicate not only a major scale but also its relative minor.

On page 10 is a listing of major/minor key signatures.